



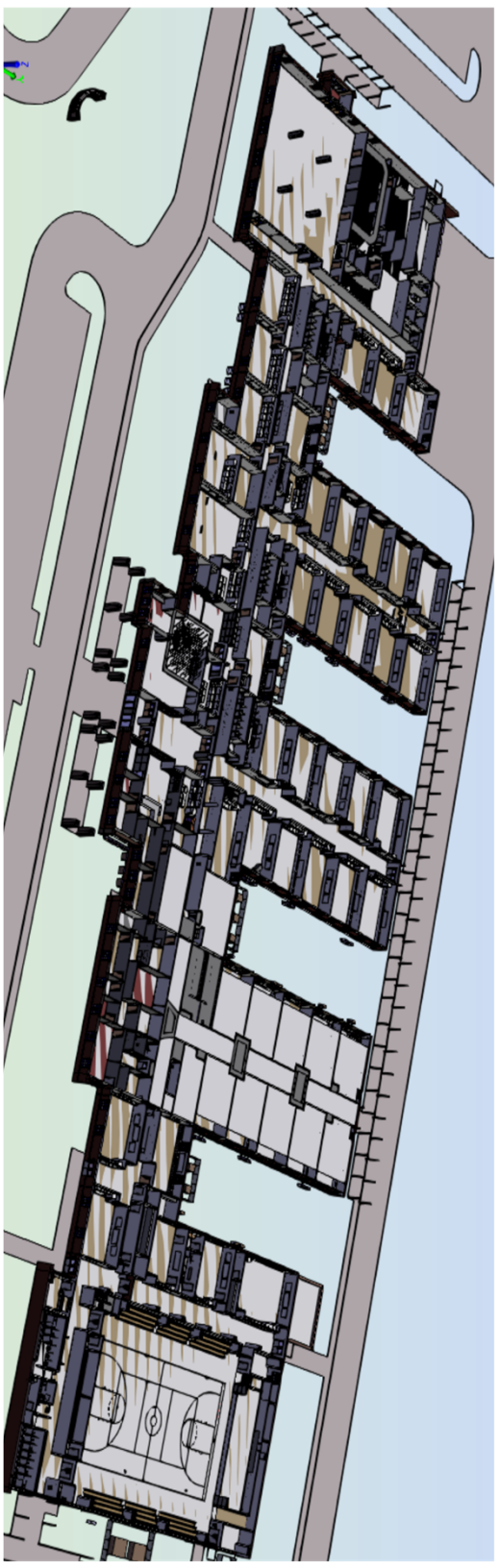
RA-LIN and Associates - Fort Payne Elementary School  
Slideshow - September 4 2019 - Photo 03

# FT PAYNE ELEMENTARY SCHOOL

## PROJECT PROGRESS REPORT

9.26.19





## PROJECT CONSTRUCTION BUDGET

CONTRACT BAGGETTE \$19,310,000  
CONTRACT VALLEY JOIST \$216,119

TOTAL CONST CONTRACT AMOUNT \$19,850,119

VE CREDITS OFFERED – (\$36,016 proposed, \$17,946 accepted currently)

POTENTIAL ADDITIVE CHANGE ORDERS – \$14,533

**TOTAL**  
**100,566 SF**  
**SITE AREA**  
**21 ACRES**  
**CLASSROOMS**  
**47 EA**

**19.8M** PROJECT VALUE

**26 %** PERCENT COMPLETE

**FT PAYNE ELEMENTARY SCHOOL**

**4.8M** COST BILLED TO DATE

**BY THE NUMBERS**

**18** PROJECT DURATION (MO)



# QUALITY ASSURANCE / QUALITY CONTROL

- **MATERIAL TESTING** – An allowance for replacement of unsuitable soils was included in the bid of 12,500 cy. To date there has been 899 cy replaced. All other material testing (concrete, masonry, steel) has been satisfactory.
- **OAC & PREINSTALL MEETINGS**
  - OAC's – every 2 weeks
  - Preinstall meetings – CONCRETE, MASONRY, ROOFING
- **FIELD VISITS BY RA-LIN** – Multiple visits per week
- **TOOLS BEING USED BY RA-LIN**
  - **PROCORE** – Software project HUB for all communication and documentation
  - **Multi Vista** – Progress Photo Documentation





# PROJECT SCHEDULE

CURRENT CONTRACTUAL  
COMPLETION DATE – AUGUST 20<sup>th</sup>  
2020

## ONGOING ACTIVITIES

- CONCRETE
- MASONRY
- TRUSSES
- ROOFING
- MEP ROUGH IN
- SITEWORK



FOR QUESTIONS, PLEASE CONTACT

**CHRIS CLARK**  
FIELD COORDINATOR

256.541.6023  
chris.clark@ra-lln.com

